

2024



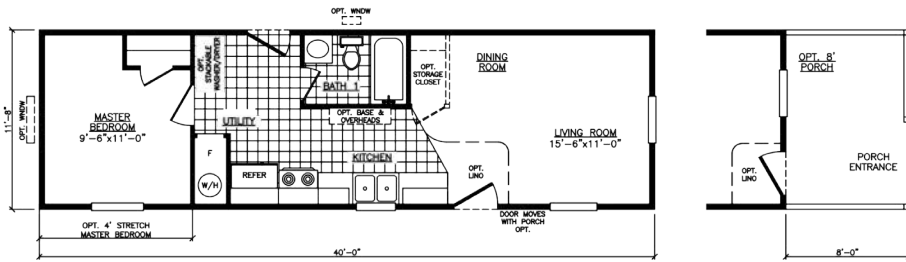
The
Mojave
Single Series



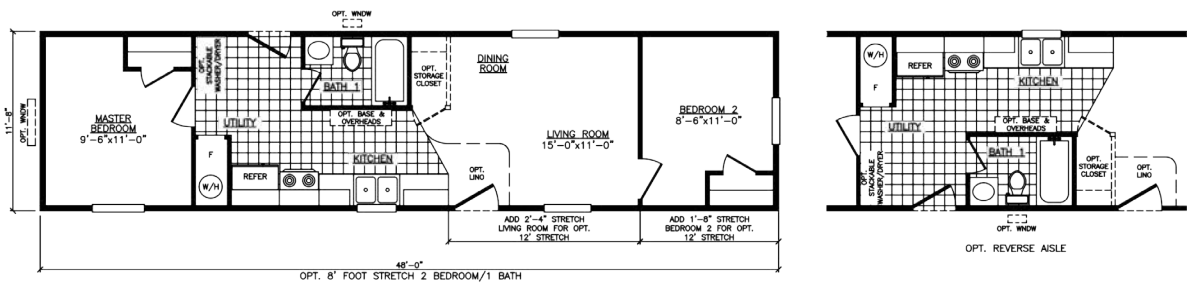
Welcome to Adventure Homes. We offer you the best value in manufactured housing in today's market. Our homes are built with unbelievable eye appeal & product standards are often above and beyond HUD code. Additionally, we offer award winning sales, service and production teams to enhance your value even more. **We look forward to assisting you and welcoming you into our family of satisfied retailers and customers!**

The *Lincoln*

Model 1401S
 1 Bedroom • 1 Bath • Floor Size 467 sq. ft.

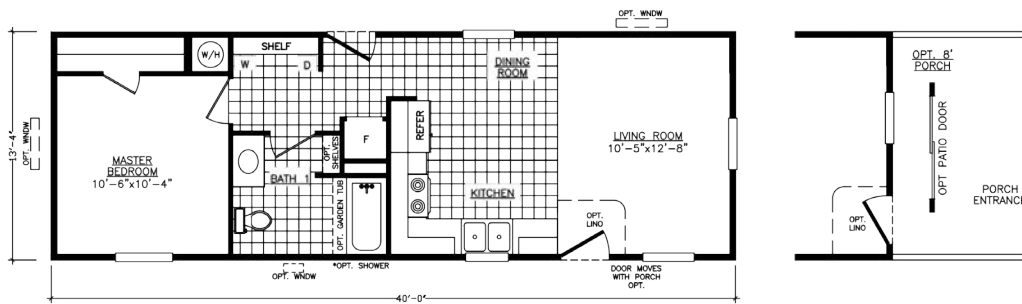


OPT. 4' STRETCH MASTER BEDROOM
 OPT. 8' STRETCH 2 BEDROOM/1 BATH
 OPT. 12' STRETCH 2 BEDROOM/LIVING ROOM

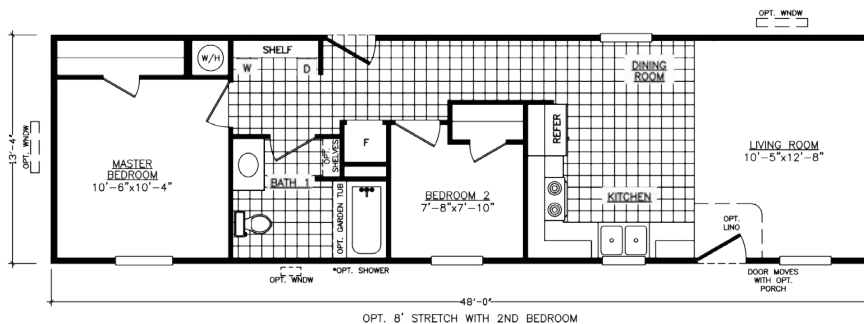


The *Vantage*

Model 2401LL
 1 Bedroom • 1 Bath • Floor Size 534 sq. ft.



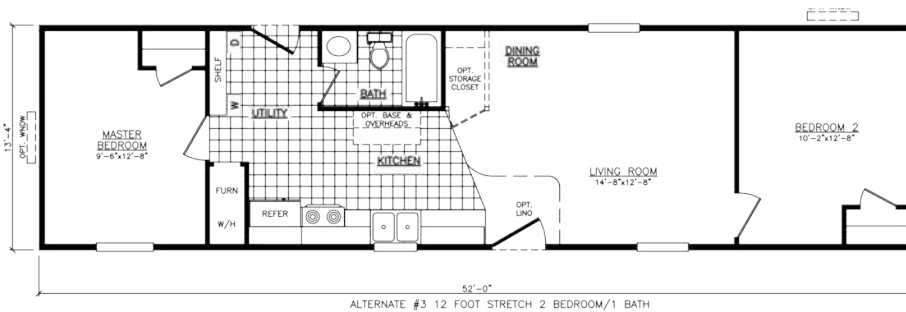
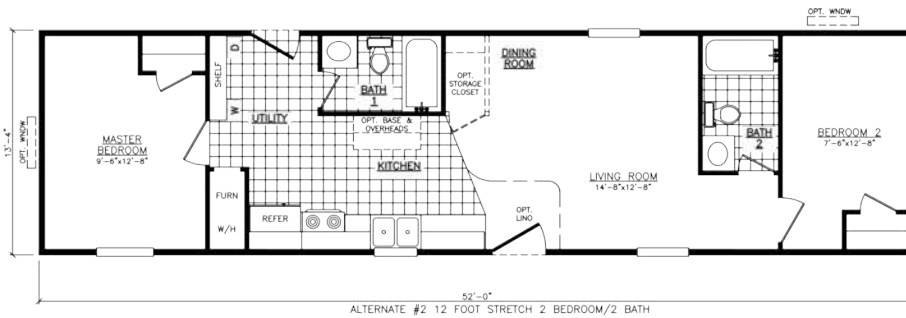
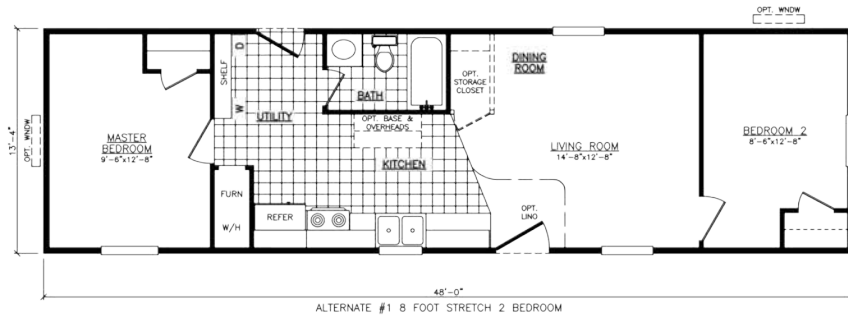
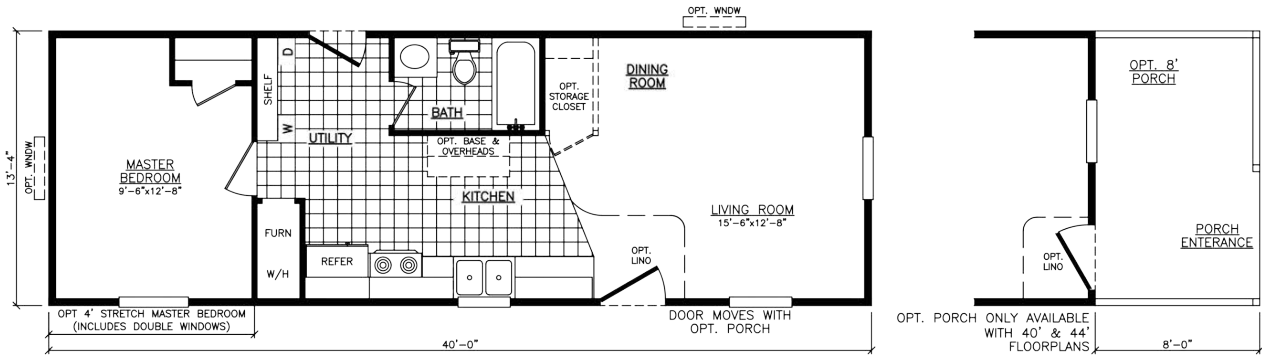
*REVERSE AISLE AVAILABLE



OPT. 8' STRETCH WITH 2ND BEDROOM

The Sequoia

Model 2401S
1 Bedroom • 1 Bath • Floor Size 534 sq. ft.

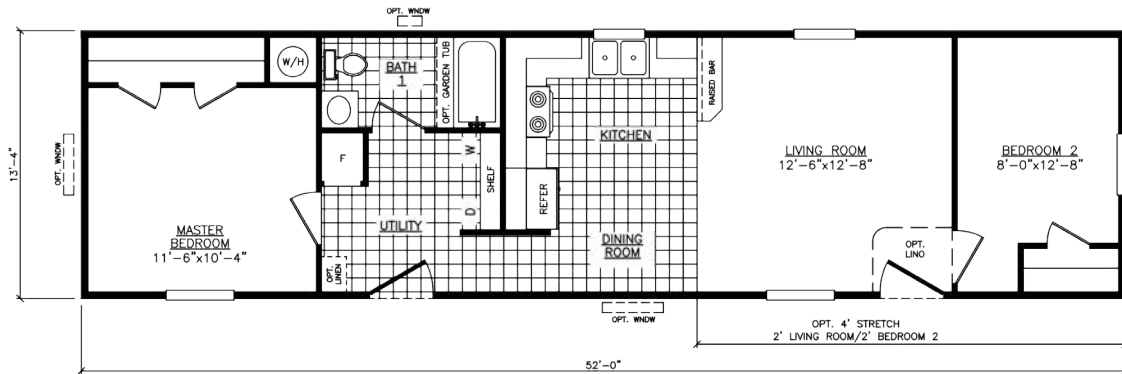
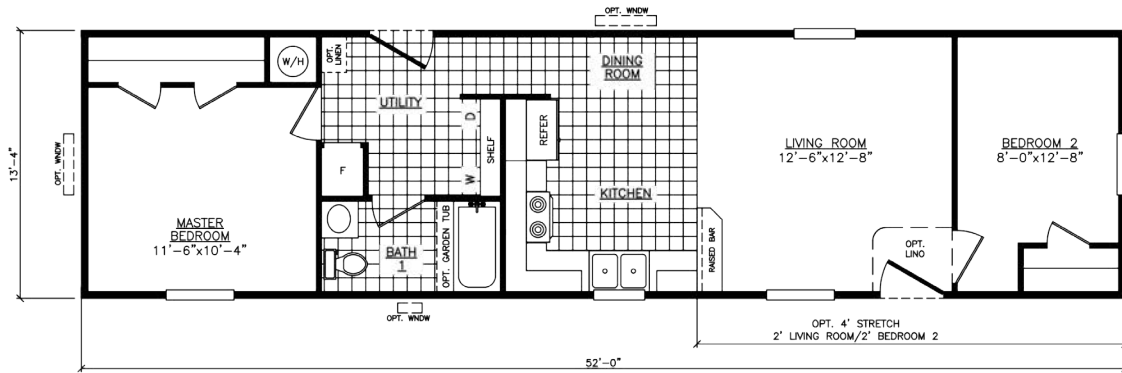


Every home built by Adventure is constructed with premium materials in a climate-controlled enclosed building facility. This helps eliminate weather-damaged building supplies and weather-related delays. These state-of-the-art facilities ensure precise and quality construction. All Adventure homes meet, and in many cases exceed HUD code.

Adventure Homes Mojave Series can be customized to fit your every day needs and wants!

The Sierra

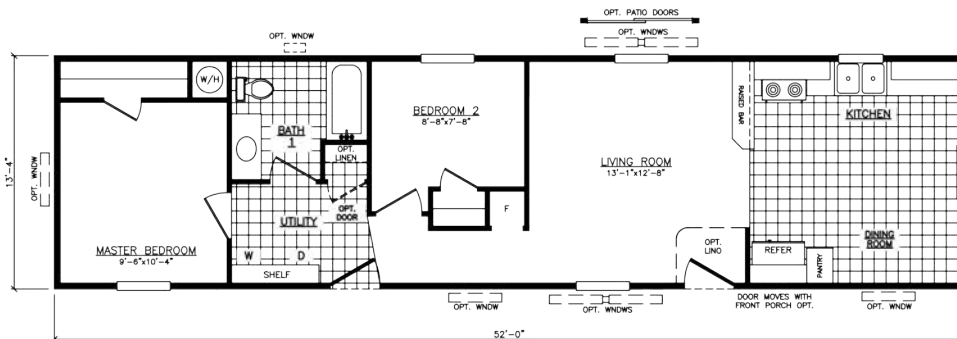
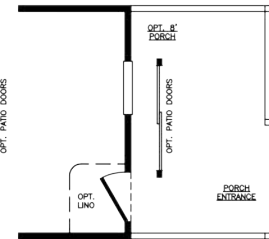
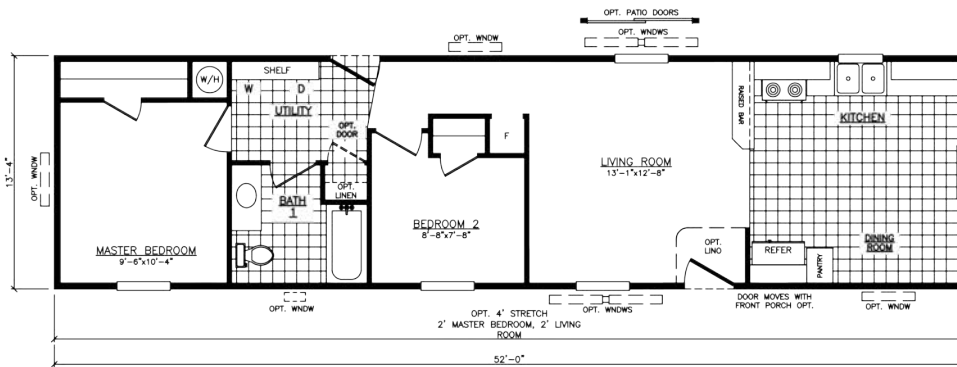
Model 2522C
2 Bedroom • 1 Bath • Floor Size 694 sq. ft.



OPT. REVERSE AISLE

The Northwest

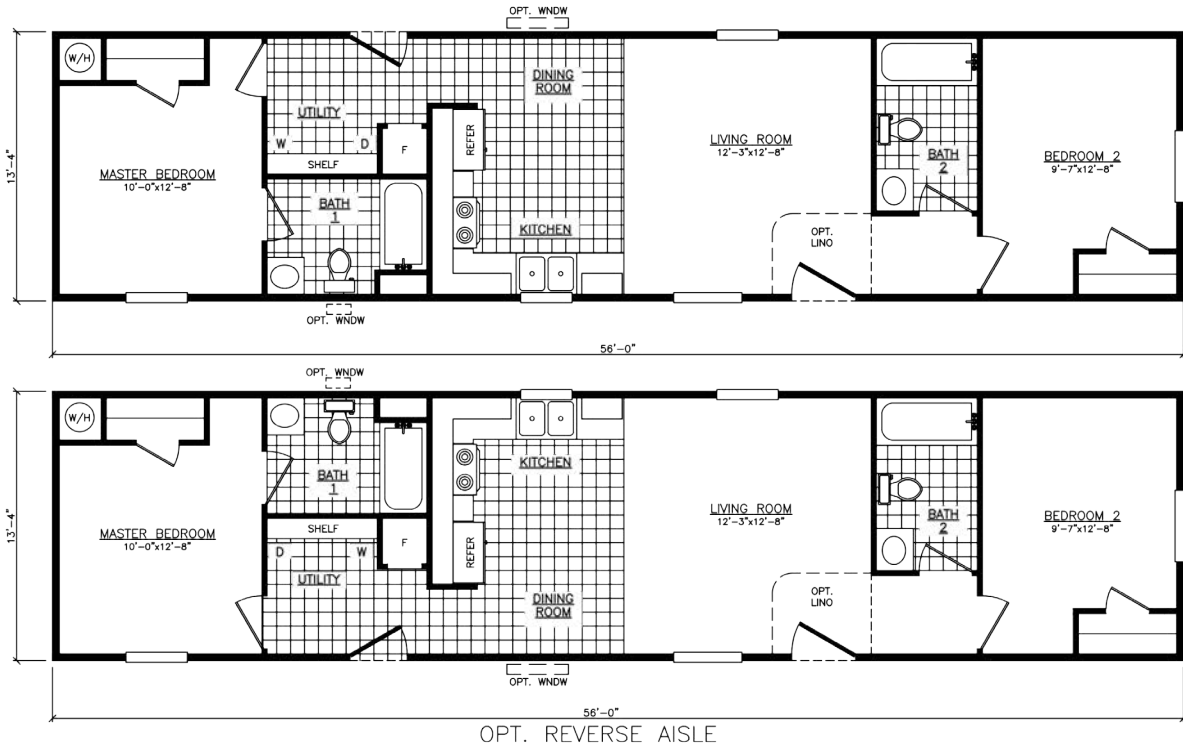
Model 2522W
2 Bedroom • 1 Bath • Floor Size 694 sq. ft.



OPT. REVERSE AISLE

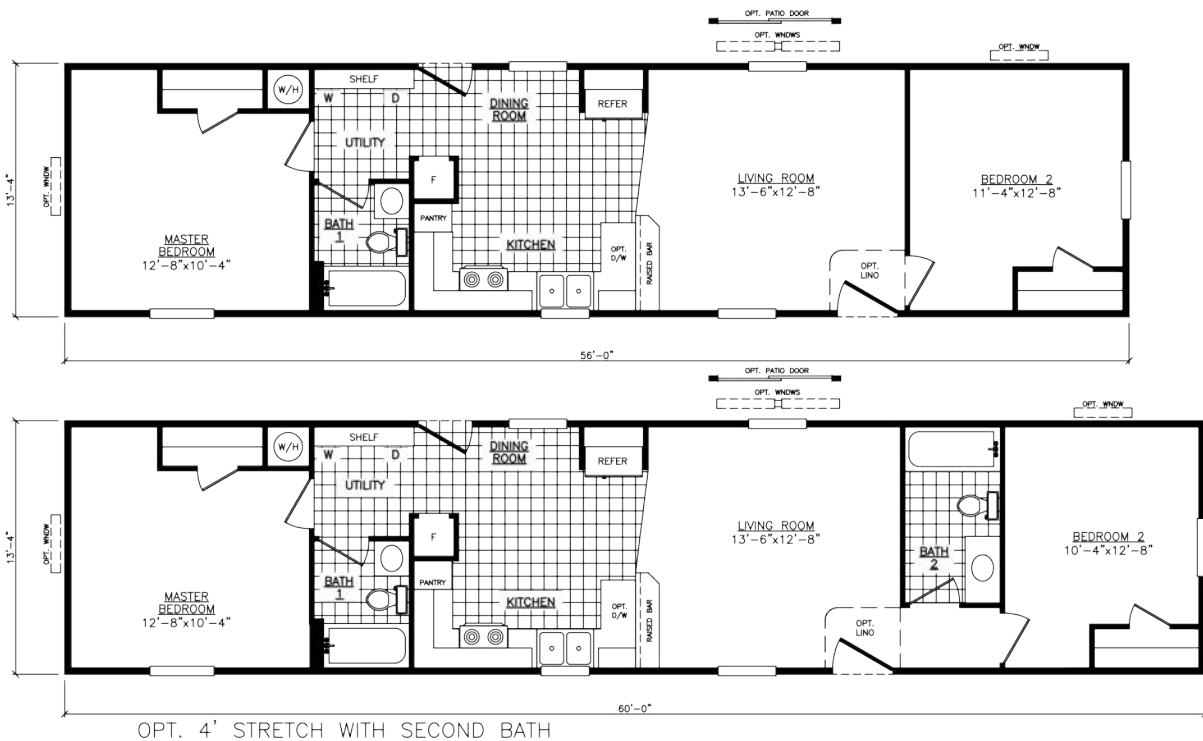
The Omaha

Model 2562U
2 Bedroom • 2 Bath • Floor Size 747 sq. ft.



The Totem

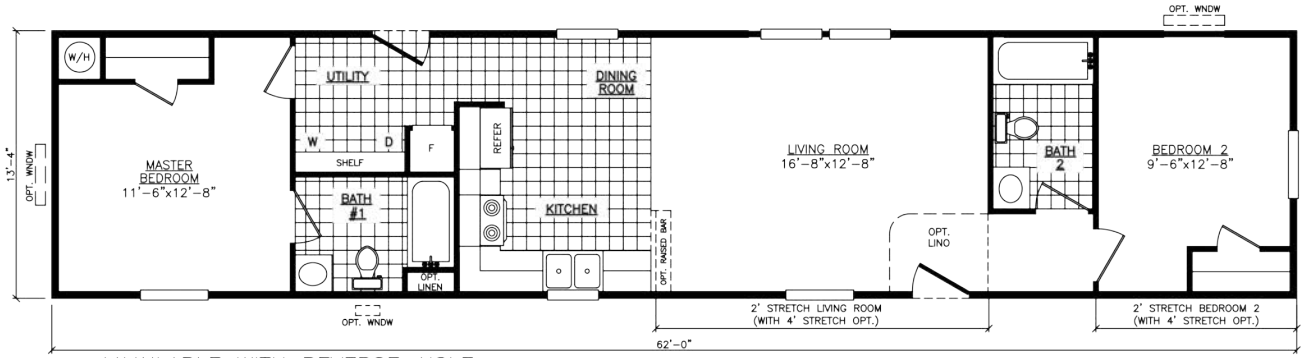
Model 2562Z
2 Bedroom • 1 Bath • Floor Size 747 sq. ft.



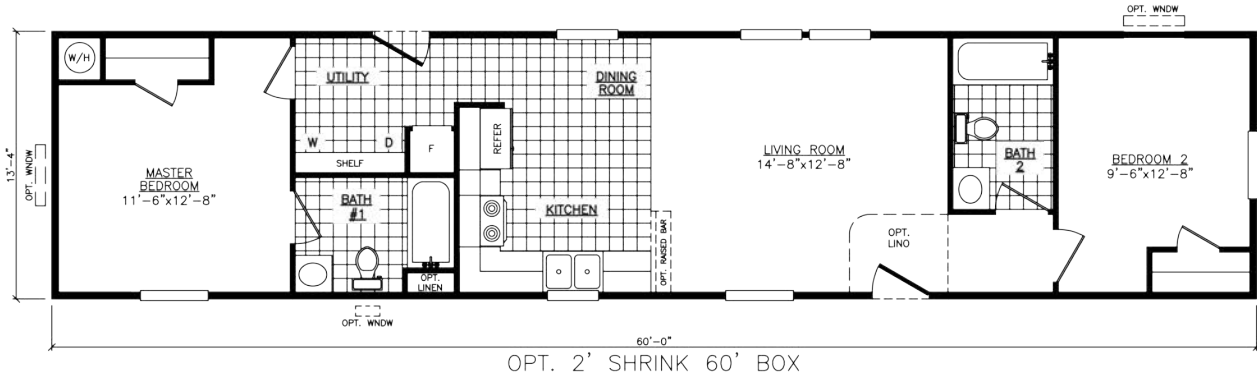
OPT. 4' STRETCH WITH SECOND BATH

The *Madison*

Model 2622X
2 Bedroom • 2 Bath • Floor Size 827 sq. ft.



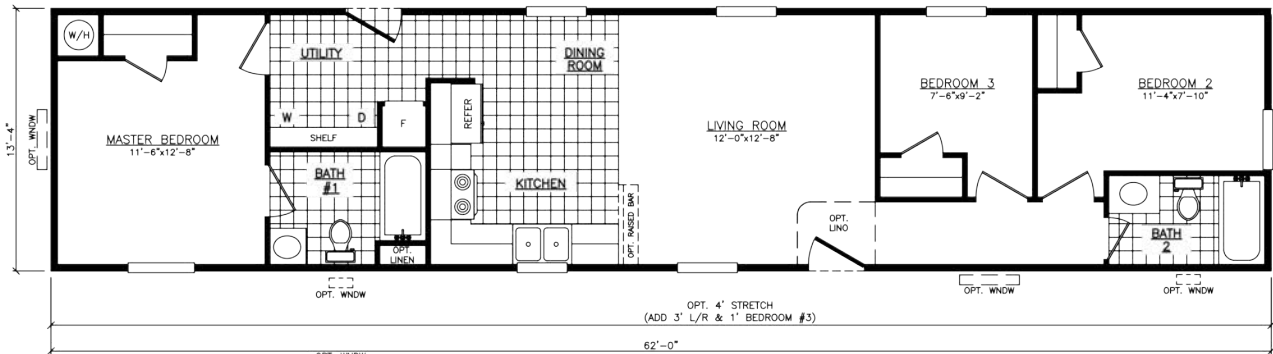
*AVAILABLE WITH REVERSE AISLE



OPT. 2' SHRINK 60' BOX

The *Prairie*

Model 2623X
3 Bedroom • 2 Bath • Floor Size 827 sq. ft.



OPT. REVERSE AISLE

OPT. 2' SHRINK AVAILABLE
(SUBTRACT 1' MASTER BEDROOM & 1' LIVING ROOM WITH SHRINK)

The *Timberland*

Model 2663B
3 Bedroom • 2 Bath • Floor Size 880 sq. ft.



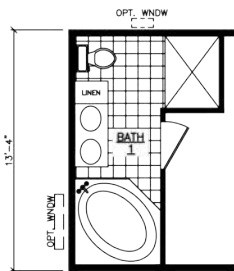
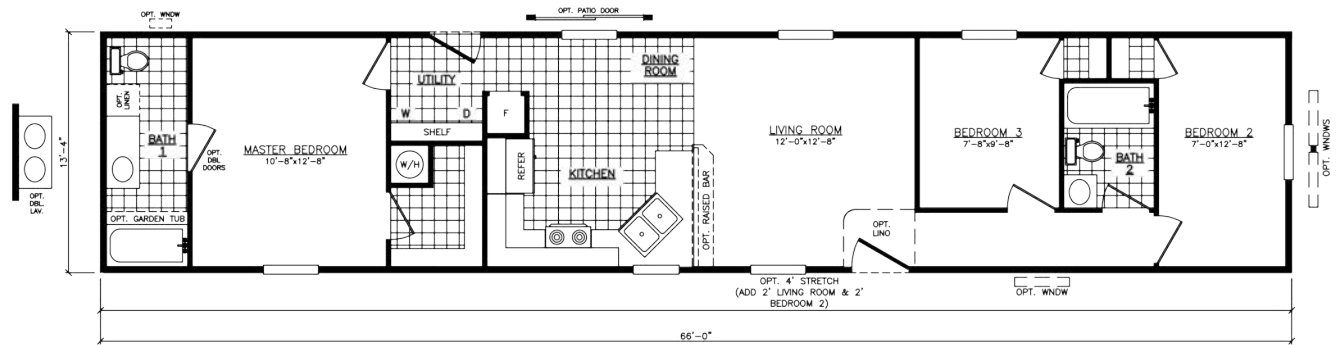
The *Morrison*

Model 2663F
3 Bedroom • 2 Bath • Floor Size 880 sq. ft.

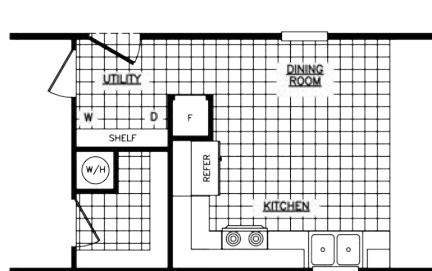


The *Telton*

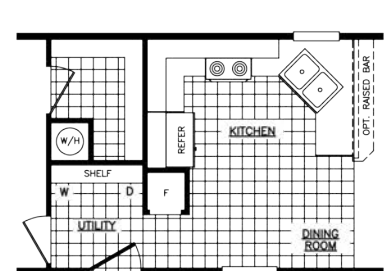
Model 2663W
3 Bedroom • 2 Bath • Floor Size 880 sq. ft.



OPT. GLAMOUR BATH



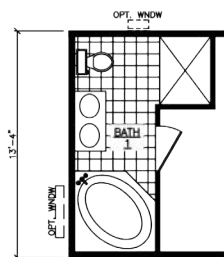
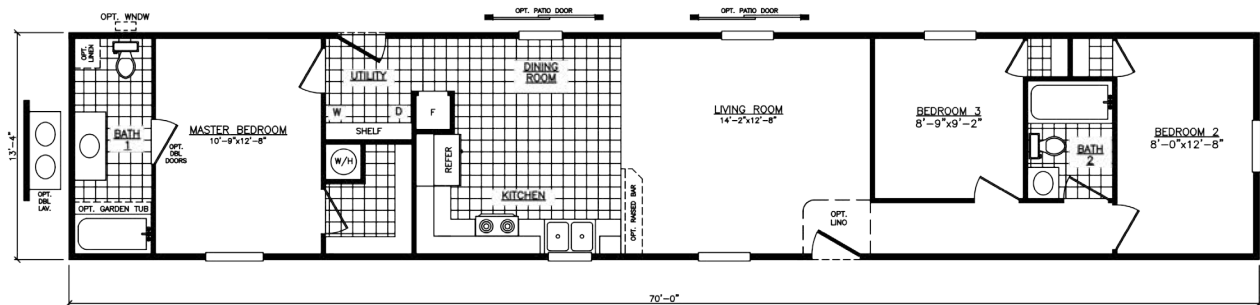
ALTERNATE KITCHEN



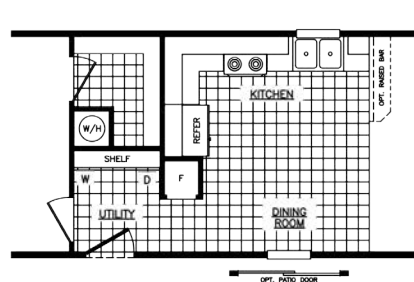
OPT. REVERSE AISLE

The *Riverview*

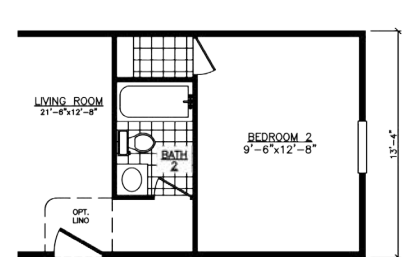
Model 2703D
3 Bedroom • 2 Bath • Floor Size 934 sq. ft.



OPT. GLAMOUR BATH



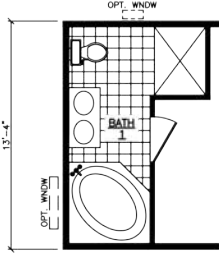
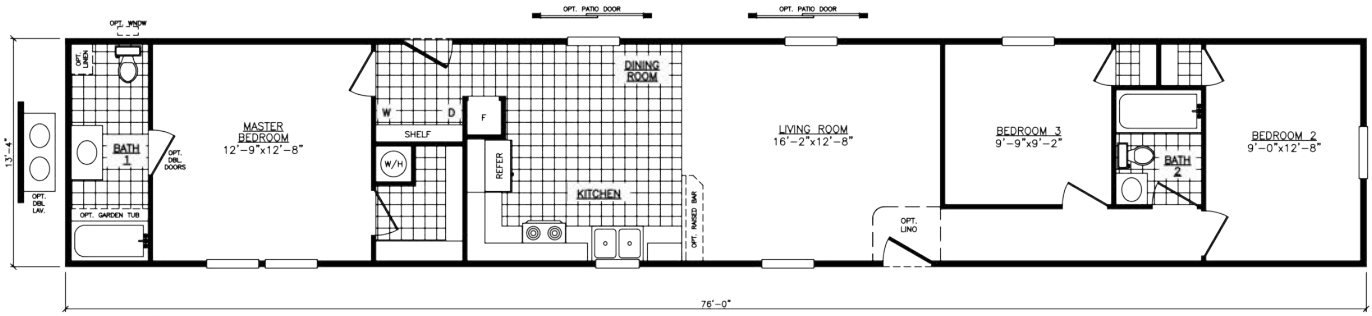
OPT. REVERSE AISLE



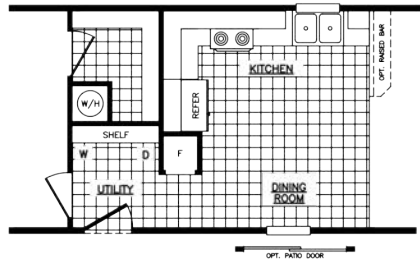
OPT. 2 BEDROOM

The Sterling

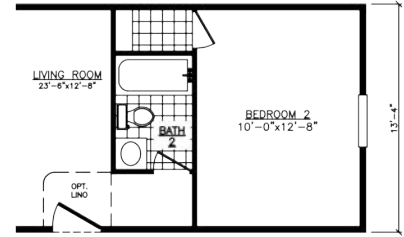
Model 2763D
3 Bedroom • 2 Bath • Floor Size 1,014 sq. ft.



OPT. GLAMOUR BATH



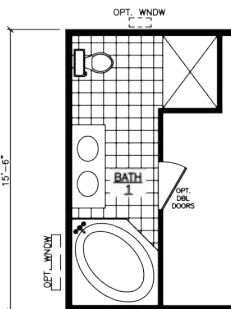
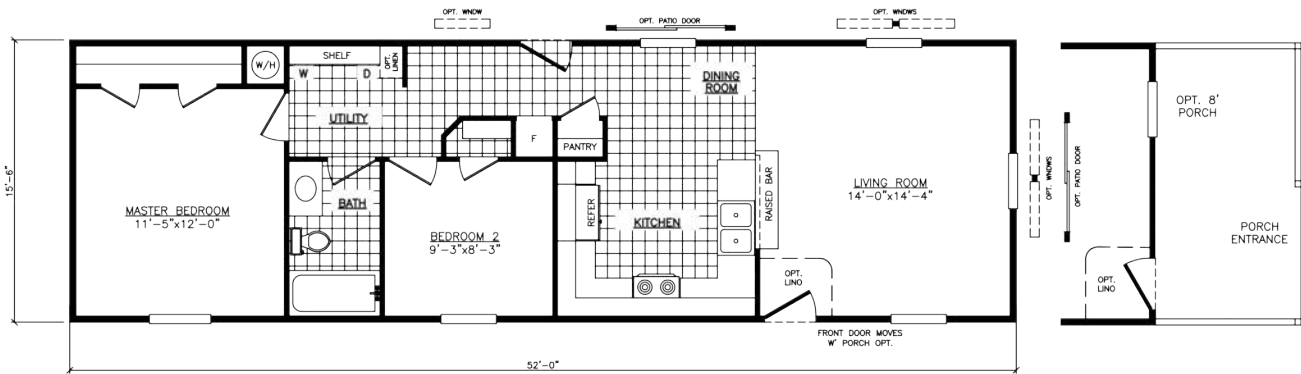
OPT. REVERSE AISLE



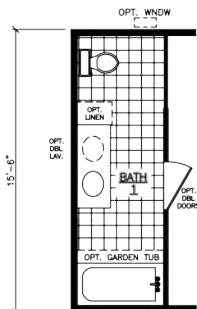
OPT. 2 BEDROOM

The Vista

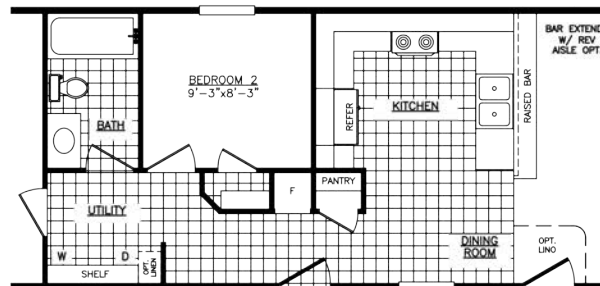
Model 6522W
2 Bedroom • 1 Bath • Floor Size 806 sq. ft.



OPT. GLAMOUR BATH WITH OPT. 4' STRETCH (INCLUDES -1' LIVING ROOM)



OPT. 2ND BATH WITH OPT. 4' STRETCH (INCLUDES -1' LIVING ROOM)



OPT. REVERSE AISLE

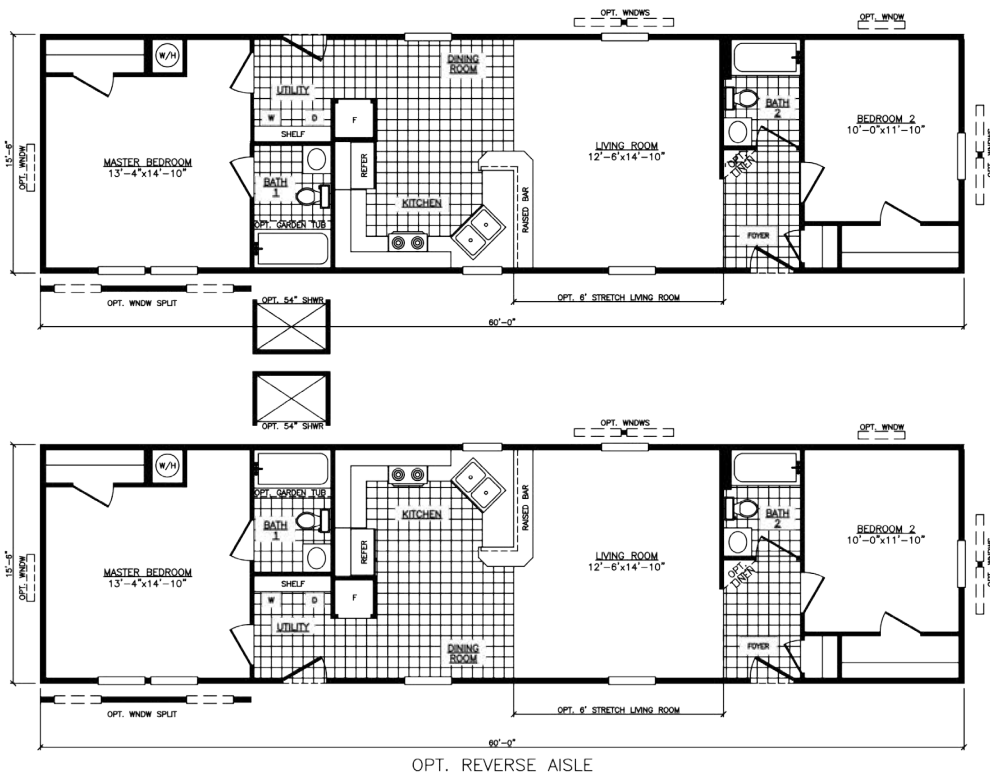
The *Pikeville*

Model 6562N
2 Bedroom • 2 Bath • Floor Size 868 sq. ft.



The *Tippecanoe*

Model 1660-2
2 Bedroom • 2 Bath • Floor Size 930 sq. ft.



The *Conestoga*

Model 6603U
3 Bedroom • 2 Bath • Floor Size 930 sq. ft.



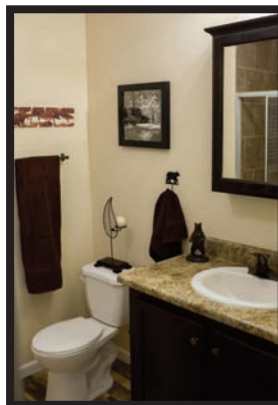
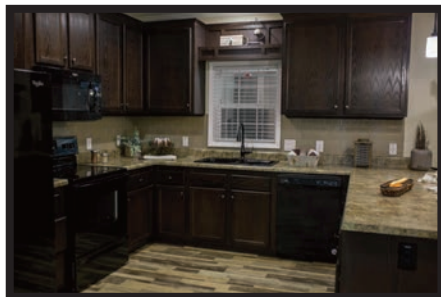
The *Senoran*

Model 6663X
3 Bedroom • 2 Bath • Floor Size 1,023 sq. ft.



The Hudson

Model 6682S
2 Bedroom • 2 Bath • Floor Size 1,054 sq. ft.



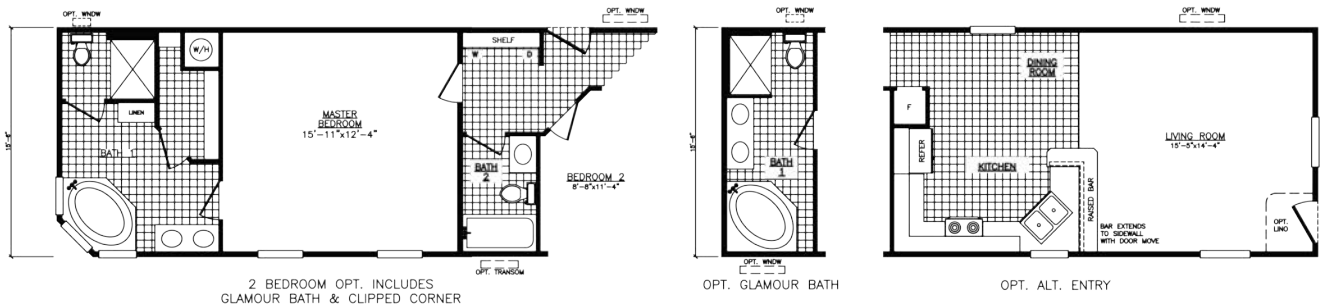
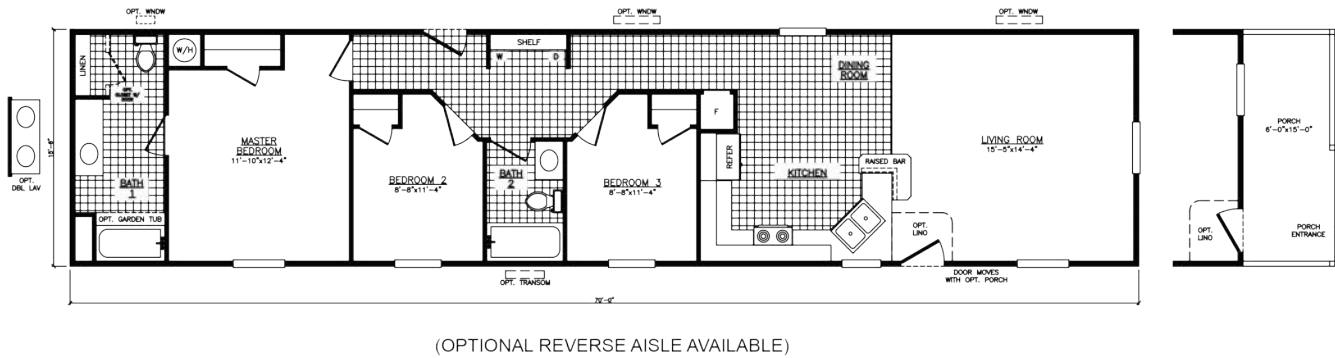
The *Sylvan*

Model 6683L
3 Bedroom • 2 Bath • Floor Size 1,054 sq. ft.



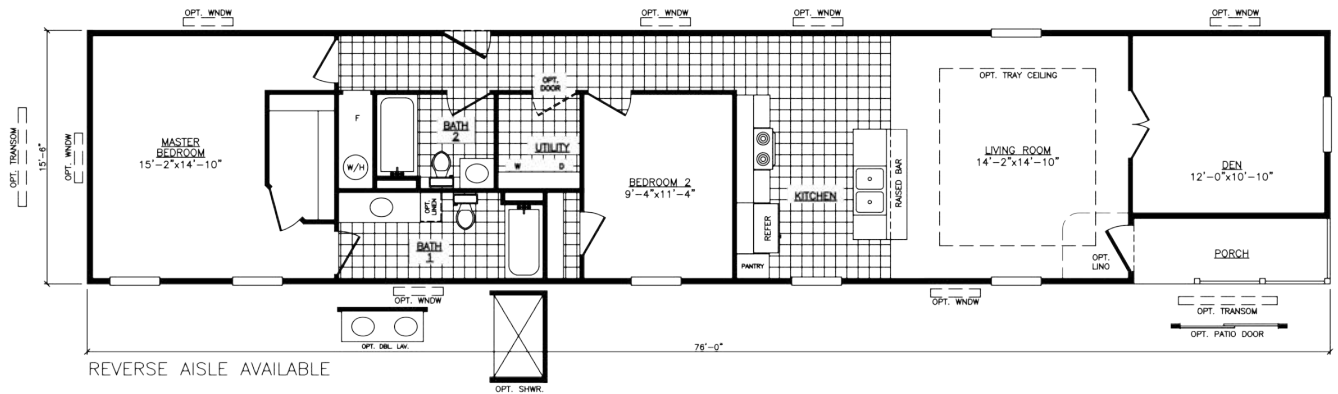
The *Winchester*

Model 6703F
3 Bedroom • 2 Bath • Floor Size 1,085 sq. ft.



The Westgate

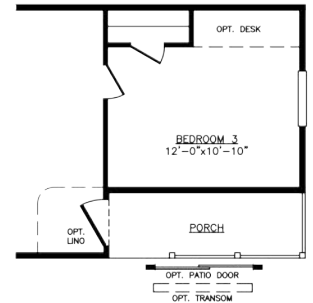
Model 6762L
2 Bedroom • 2 Bath • Floor Size 1,178 sq. ft.



REVERSE AISLE AVAILABLE



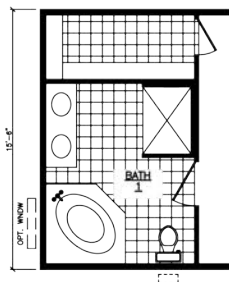
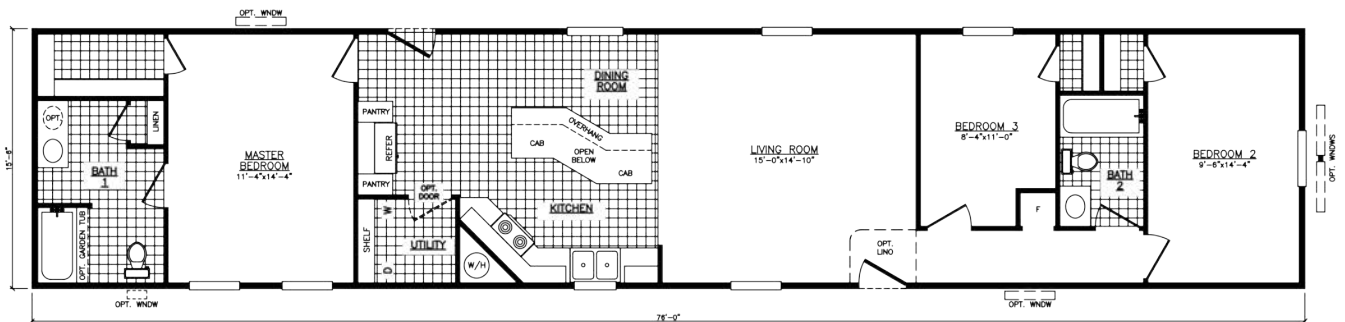
OPT. 3 BEDROOM



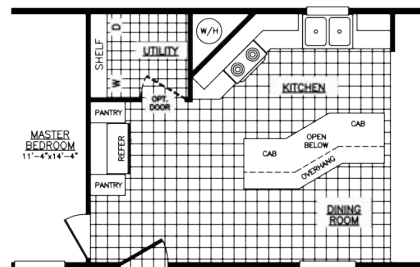
OPT. 3 BEDROOM & PORCH

The Southwest

Model 1676-2
3 Bedroom • 2 Bath • Floor Size 1,178 sq. ft.



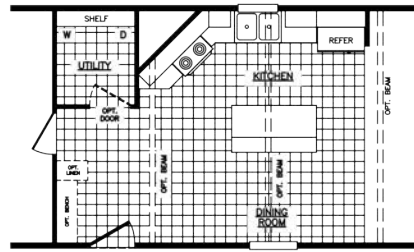
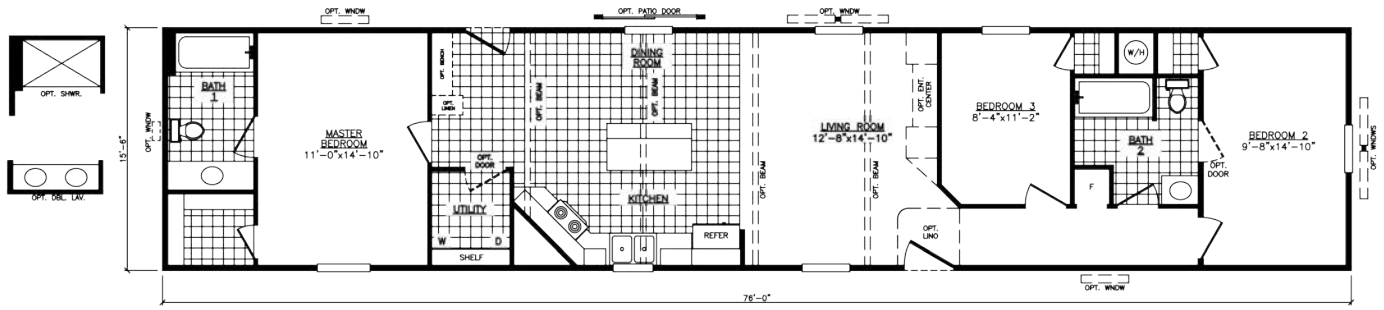
OPT. GLAMOUR BATH



OPT. REVERSE AISLE

The *Landmark*

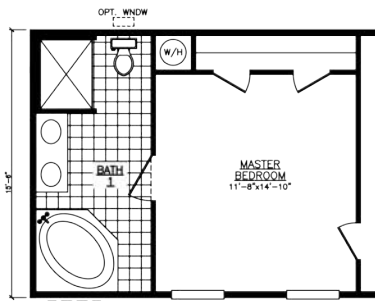
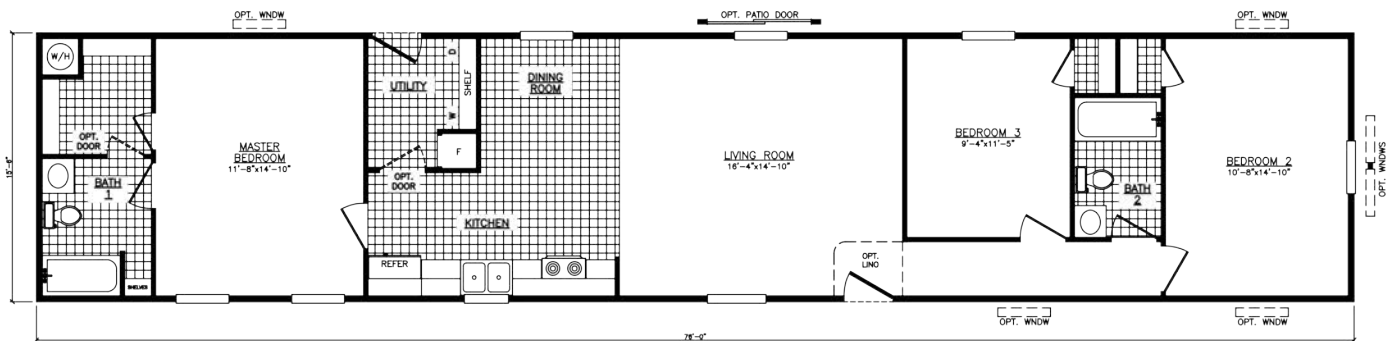
Model 6763AA
3 Bedroom • 2 Bath • Floor Size 1,178 sq. ft.



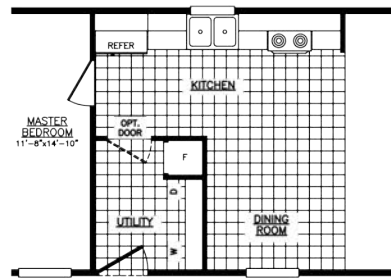
OPT. REVERSE AISLE

The *Melody*

Model 6763B
3 Bedroom • 2 Bath • Floor Size 1,178 sq. ft.



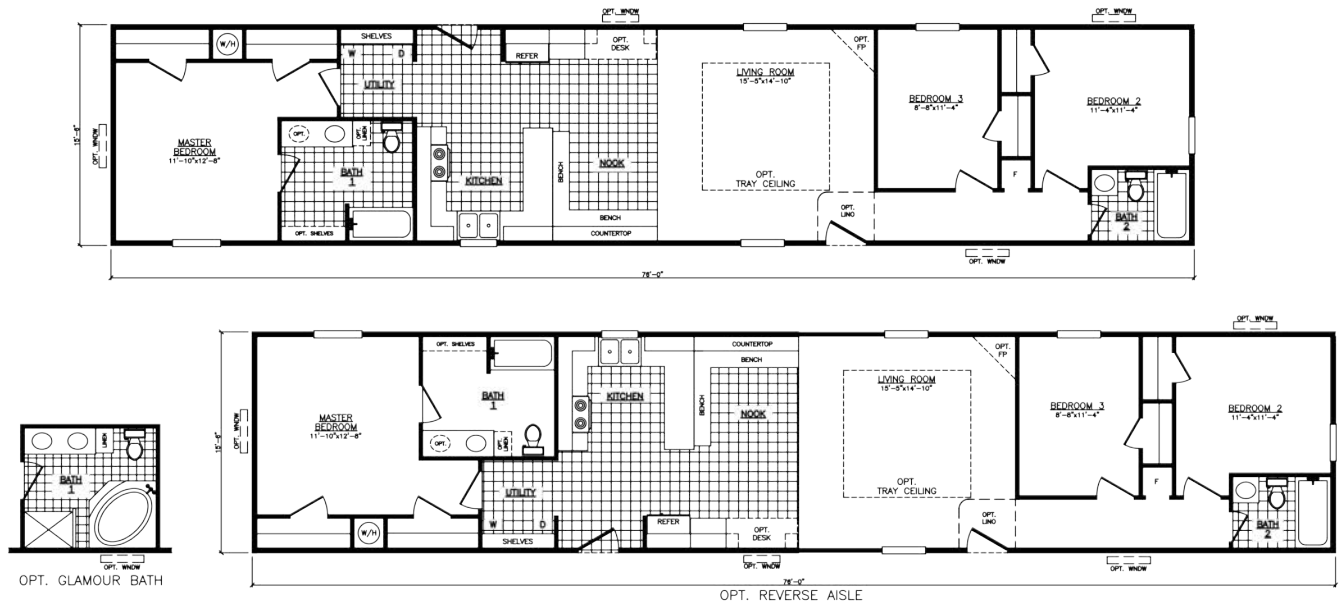
OPT. GLAMOUR BATH



OPT. REVERSE AISLE

The *Biscayne*

Model 6763G
3 Bedroom • 2 Bath • Floor Size 1,178 sq. ft.



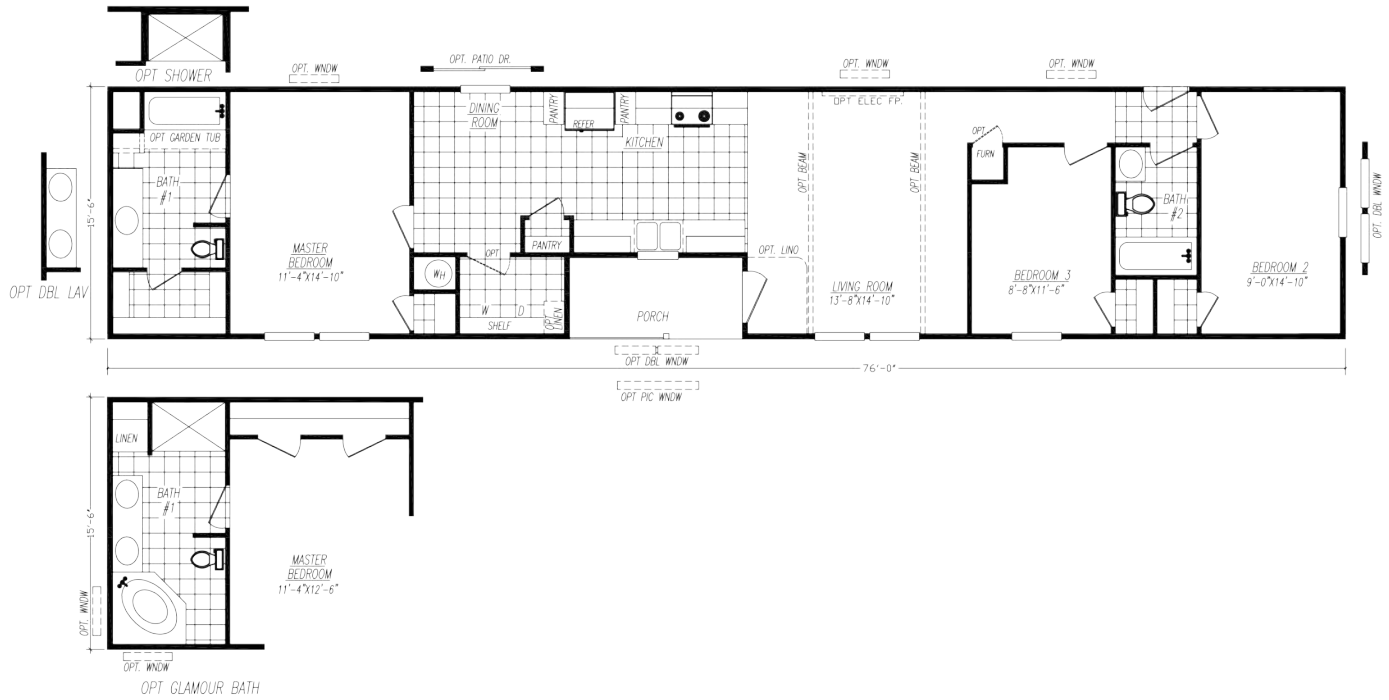
The *Phoenix*

Model 6763H
3 Bedroom • 2 Bath • Floor Size 1,178 sq. ft.



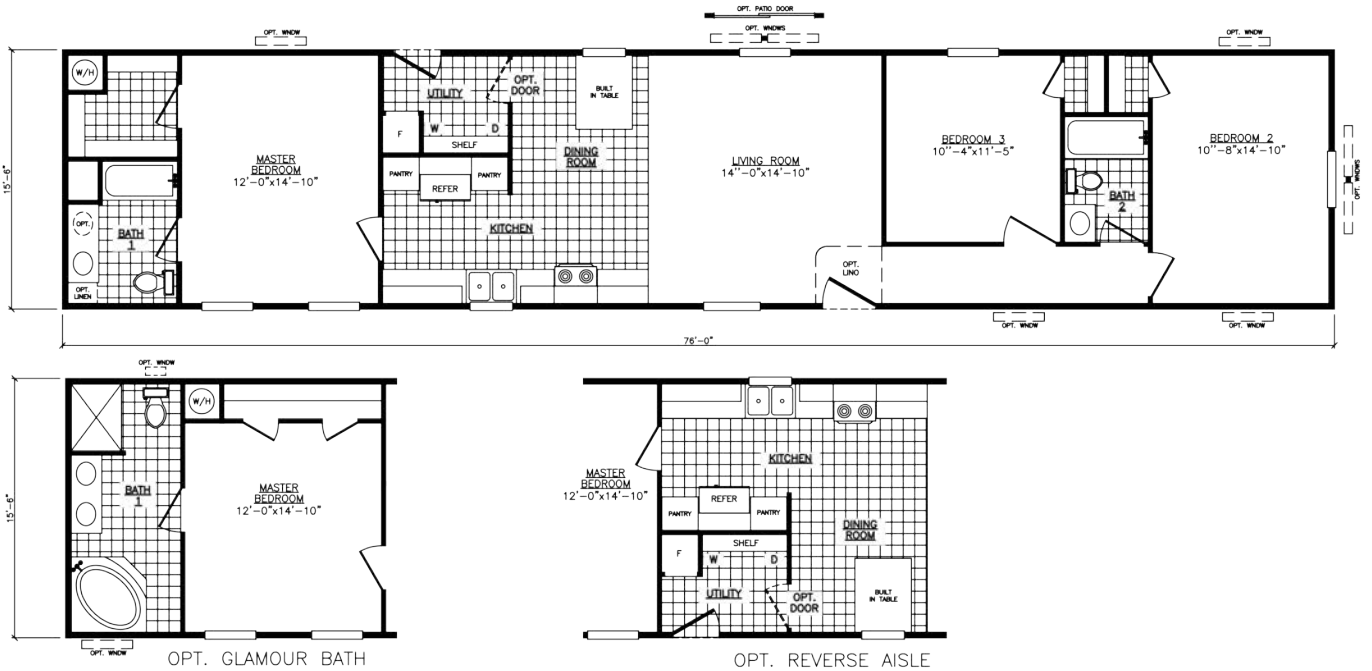
The Reynolds

Model 6763L
3 Bedroom • 2 Bath • Floor Size 1,178 sq. ft.



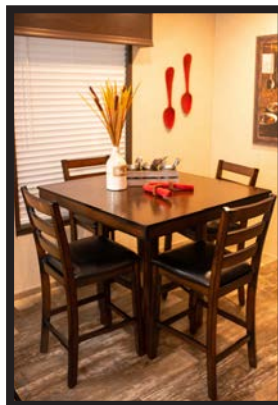
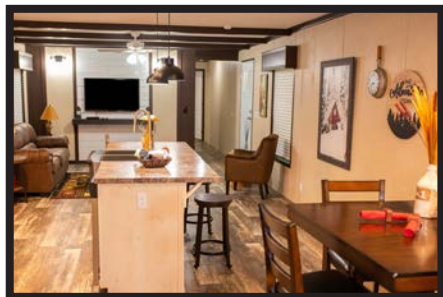
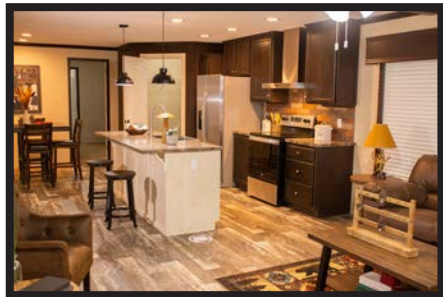
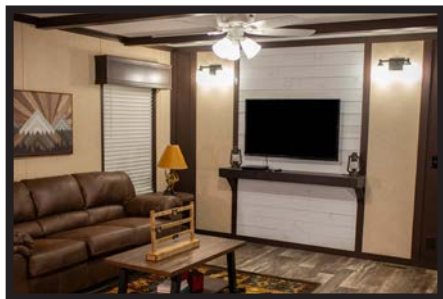
The Convoy

Model 6763R
3 Bedroom • 2 Bath • Floor Size 1,178 sq. ft.



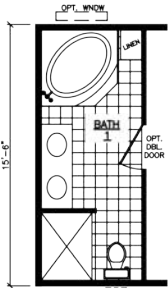
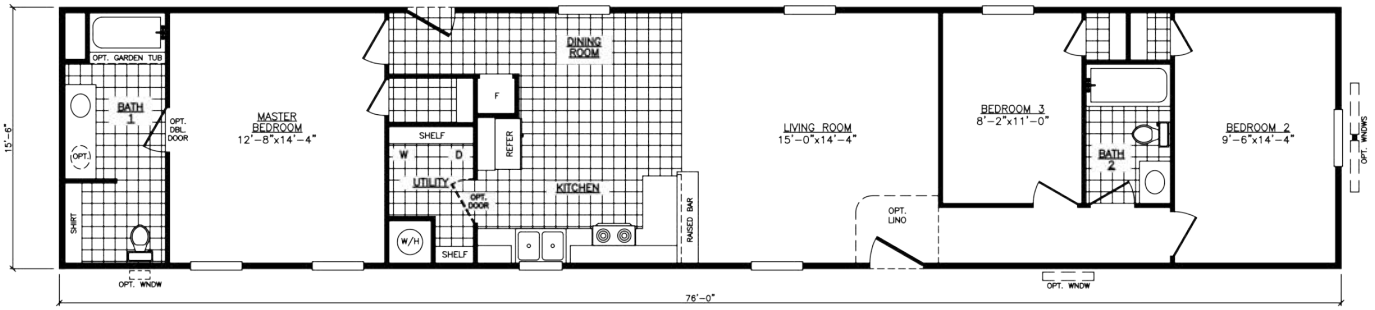
The Farmstead

Model 6763V
3 Bedroom • 2 Bath • Floor Size 1,178 sq. ft.

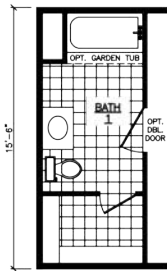


The *Independence*

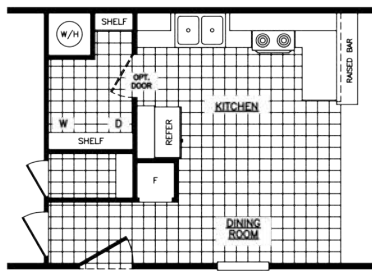
Model 6763X
3 Bedroom • 2 Bath • Floor Size 1,178 sq. ft.



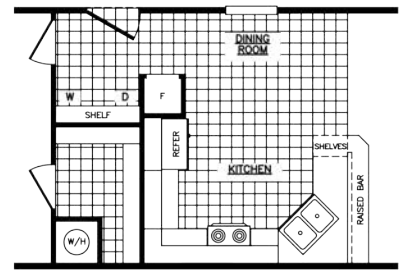
OPT. GLAM BATH



ALT. BATH WITH CLOSET



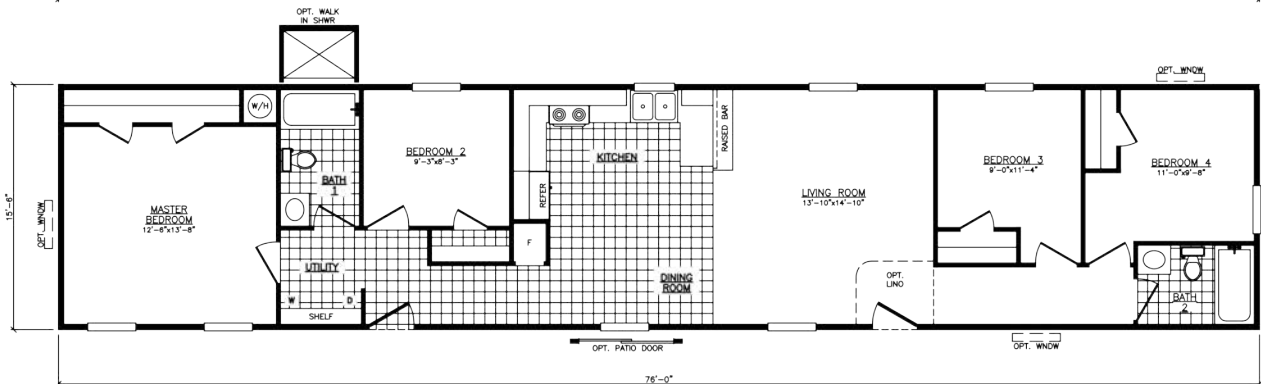
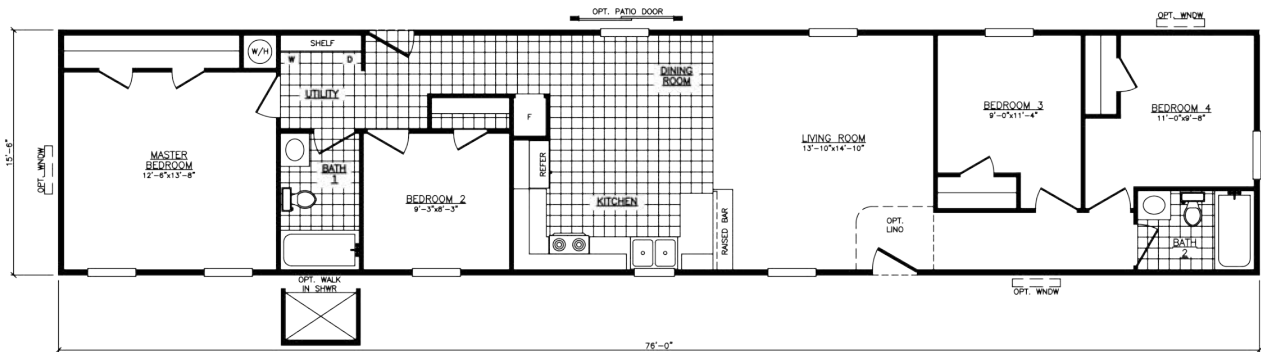
OPT. REVERSE AISLE



OPT. ALT. KITCHEN

The *Roosevelt*

Model 6764X
4 Bedroom • 2 Bath • Floor Size 1,178 sq. ft.



OPT. REVERSE AISLE

Mojave Series

Standard Features

Exterior

Thermal Zone III Construction
Nominal 3/12 Roof Pitch
R-28-11-11 Insulation
(Additional Windows & Doors May Require Higher Insulation Values)
Vinyl Siding
7/16" OSB Wrap under Vinyl Siding
Housewrap w/ Window Tape
3-Tab Fiberglass Shingles
7/16" OSB Roof Sheathing
Dead Bolt Locks at Front and Rear (Keyed Alike)
Vinyl Single Hung Windows w/ Grids - Low "E" w/ Argon
Foam All Exterior Windows
38"x82" R.O. 6 Panel Residential Front Door (No Storm)
34"x82" R.O. 6 Panel Residential Rear Door (No Storm)
2x6 Floor Joists 16" O.C. (12', 14', 24' & 28' Wides)
2x8 Floor Joists 16" O.C. (16' & 32' Wides)
20 LB Roof Load
2x4 Exterior Walls 16" O.C.
Raised Panel Shutters at FDS & Hitch (Single)
Raised Panel Shutters at FDS Only (Sectional)
Light Fixtures at All Exterior Doors
Full Length Chassis w/ Outriggers
99.5" I-Beam Spread, Detachable Hitch

Interior

Customer Choice Decor Selections
2" Plastic Mini-Blinds Throughout
Door Stop All 3 Sides
94" Flat Ceilings
Blown Textured Ceiling
OSB Tounge & Groove Floor Decking
Vinyl Wall Panels Throughout
Flat Wrapped Moldings Throughout
25oz. Plush Carpet
3/8" Rebond Carpet Pad
Vinyl Flooring
Wire Closet Shelving
2 Panel White Interior Doors Throughout
Mortised Interior Door Hinges

Electrical, Plumbing, & Heating

Smoke Detectors in Main Living Areas &
All Bedrooms
200 AMP Service, Electric Furnace
40 Gallon Electric Water Heater
Exterior Electrical Receptacle (FDS)
Copper Wiring, PEX Plumbing
Whole House Shut-off Valve near Water Heater
Water Shut-off Valves (All Sinks & Commodes)
Metal Heat Ducts
GFI Receptacles in Kitchen and Baths
Bedroom Ceiling Lights Throughout
Plumb & Wire for Washer & Dryer
Utility Shelf above Washer & Dryer

Kitchen

Black Electric Coil Top Range
Black 18cf Refrigerator
Black 30" Power Range Hood
30" Overhead Cabinets w/ Fixed Center Shelves
Shaker Style MDF Wrapped Cabinet Doors & Stiles
Concealed Cabinet Door Hinges
(1) Bank of Drawers w/ Residential Rails & Guides
Laminated Countertops
Stainless Steel Kitchen Sink
Nickel Gooseneck Faucet w/ Pulldown Sprayer
Cabinet over Range & Shelf over Refrigerator

Bath

1pc Tub Shower w/ Anti-Scald Single Lever Faucet
(Bath #1 - Single)
1pc Garden Tub Shower (Bath #1 - Sectional)
1pc Tub Shower w/ Anti-Scald Single Lever Faucet
(Additional Bathrooms)
Laminated Countertops
Mirror above Each Bathroom Sink
Power Exhaust Fans in Bathroom(s)
China "Water Saver" Commode in Bathroom(s)
White China Sink(s) w/ Single Lever Faucet(s)

Because of continuous product improvements, specifications
are subject to change without notice or obligation

ADVENTURE HOMES

www.AdventureHomes.net

1119 Fuller Drive, Garrett, IN 46738

877-510-1955



January
2024